

# Introducing the All New HV-10

## Suitable for a Wide Range of Applications:

- Trough Weight 4-12 lb.
- IP-66
- CSA Certified
- Wide Range of Input Voltage
- 50/60 Hz Design
- Low Profile Design
- Stable Footprint

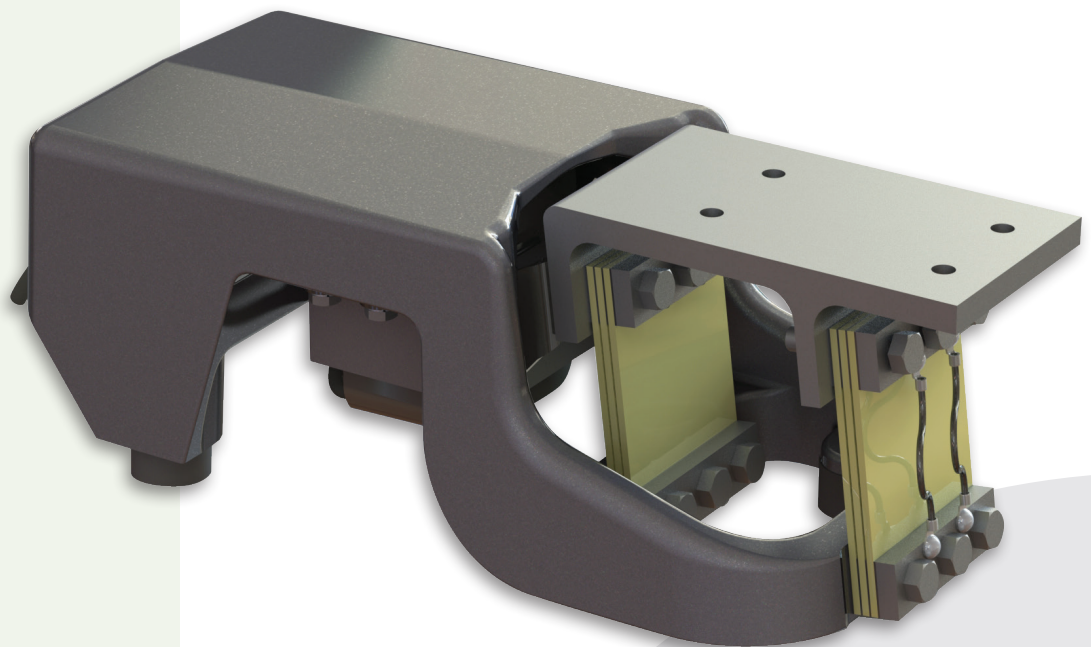
## Great for Use in Food Processing and Packaging:

- Low Product Degradation
- Sanitary Design
- Wash Down Capable
- Uniform Material Flow at Discharge

## Easy Installation and Setup:

- Single Tool Air Gap Adjustment
- Open Magnet Design
- Multiple Mounting Configurations
- Super Resonant Tuning
- Linear Speed Control

**High Velocity**  
*Highest Travel Speeds  
And Smoothest Flow  
Available in the Market*



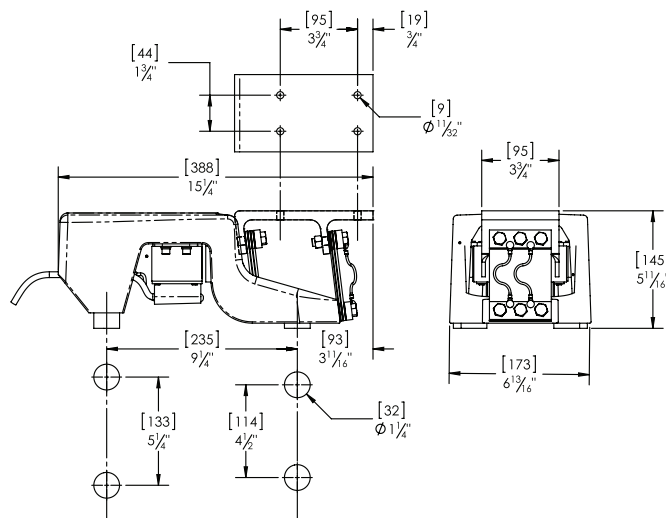
**Made in U.S.A.**

**Ideal for all of your  
Syntron vibrator  
and feeder needs**

## HV-10

Feature	Benefit
IP-66	Great for use in Clean In Place environments
Open Design	Easy to Integrate and Setup
Interchangeable Trough	Can Interchange with any FT-01, FT-02, F-010 and BF-01 for immediate increased capacity
Uniform Material Flow	Great for use in sorting, blending and coating
Extreme Travel Speed	Double capacity compared to most feeders
Low Vertical Acceleration	Low Degradation to Fragile Material

## Dimensional Data



## Part Numbers 6501-060-[Voltage Code] [Frequency Code] [ Mounting Code]

Voltage Code	Frequency Code	Mounting Code
1 – 115 Volt	5 – 50HZ	N – Standard Rubber Foot
2 – 220/230 Volt	6 – 60HZ	M – 1/4-20 Male thread
3 – 380 Volt		F – 1/4-20 Female Thread
4 – 460 Volt		C – Coil Spring Feet

*Eg. 6501-060-16N – 115V/60HZ, Standard Rubber Feet*

**Saltillo**  
 2730 Hwy 145 South  
 Saltillo, Mississippi 38866  
 Phone: 662.869.5711  
 Fax: 662.869.7493  
 Toll Free: 800.356.4898  
 orders@syntronmh.com

**Changshu**  
 #2 Road No. 1  
 Changshu Export Processing Zone  
 Changshu, Jiangsu, China 215513  
 Phone: +86 0512.52299002  
 Fax: +86 0512.52297228  
 info@syntronmh.com

[www.syntronmh.com](http://www.syntronmh.com)