

SYNTRO-FLO Cone Crusher Loading Feeders by Syntron®

The SYNTRO-FLO Cone Crusher Loading Feeder by Syntron is a MF Two-Mass Tuned Direct Drive vibratory feeder with an engineered discharge uniquely designed for equal distribution of product. The trough including the discharge is fully lined to account for wear. Like traditionally designed feeders, it is suspension mounted, which can be easily integrated into a trolley system allowing it to be moved out of the way for crusher maintenance.

In side-by-side installations of a feeder-plus-rotary distributor versus a SYNTRO-FLO Cone Crusher Loading Feeder directly feeding the crusher, the SYNTRO-FLO unit delivered superior, cone-friendly performance. The uniform distribution provided by the SYNTRO-FLO unit increased crusher manganese life and yielded more cubicle formed product.

SYNTRO-FLO is available in 3 standard sizes for tertiary crusher applications: STF-3F, STF-4F and STF-5F. In addition, Syntron is developing the STF-3C, STF-4C and STF-5C for secondary crushing applications. Both designs work with 300 HP, 400 HP and 500 HP cones respectively. These designs will allow the SYNTRO-FLO unit to be the most cost effective solution feeding your Cone Crusher equipment. (See data sheet for equipment details). Syntron can build a custom cone crushing feeder unit for larger and smaller applications upon request.

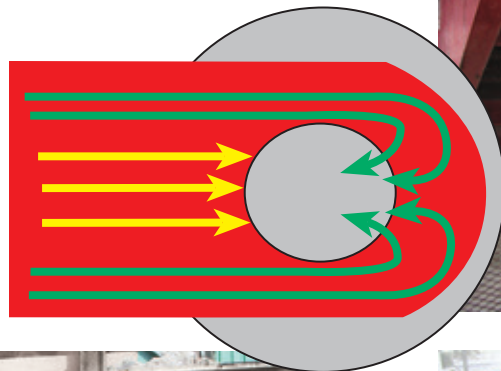


4-inch rock being distributed through the peripheral discharge of the Crusher Loading Feeder.



Blended material feeding directly from the Crusher Loading Feeder to the crusher.

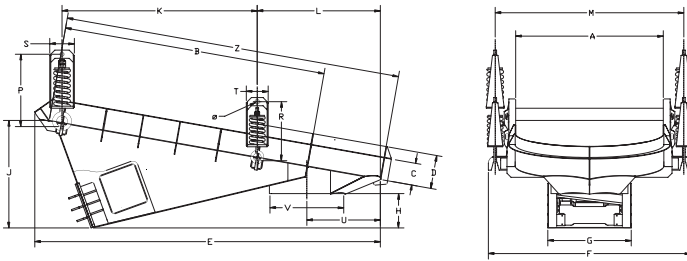
Material Flow



Uniform distribution of material to the cone.

SYNTRO-FLO 3-F, 4-F and 5-F for Fine Crushing Applications

MODEL STF-3F, STF-4F, & STF-5F



Please request a certified drawing for installation.

Model	Approx. Trough W x L	Approx. Capacity tph	Max Particle Size (in)	HP	KW	Approx. Current (460V)	Control Model	Net Wt. (lb)	Net Wt. (kg)	Approx. Ship Wt. (lbs) Feeder/Control	Approx. Ship Wt. (kg) Feeder/Control
STF-3F	42 x 84	350	7	4	3	4.4	VF-5D2	3056	1390	3700	1700
STF-4F	48 x 90	440	8	4	3	4.4	VF-5D2	3725	1694	4325	1966
STF-5F	54 x 96	550	9	4	3	4.4	VF-5D2	3955	1798	4600	2090

◆ Based on feeder with 10° down slope, below-deck drive unit, installed with proper hopper transition and skirt board arrangement, feeding sand weighing 100 pounds per cubic foot. 460/575 Volt 60 Hz three-phase. 380/415 Volt 50 Hz three-phase.

	A	B	C	D	E	F	G	H	J	K	L	M	P	R	S	T	U	V	Z	Ø
in	42.00	84.00	8.00	12.00	108.68	63.50	30.00	13.78	38.13	62.00	36.88	57.00	21.75	19.00	8.00	7.25	20.81	21.00	105.00	1.03
mm	1066.80	2133.60	203.20	304.80	2760.47	1612.90	762.00	350.01	968.38	1574.80	936.63	1447.80	552.45	482.60	203.20	184.15	528.57	533.40	2667.00	26.19
in	48.00	90.00	8.00	12.00	117.56	69.50	30.00	12.55	38.69	67.00	40.81	63.00	26.50	21.75	9.00	8.00	23.56	24.00	114.00	1.03
mm	1219.20	2286.00	203.20	304.80	2986.02	1765.30	762.00	318.77	982.66	1701.80	1036.64	1600.20	673.10	552.45	228.60	203.20	598.42	609.60	2895.60	26.19
in	54.00	96.00	8.00	12.00	126.39	75.50	30.00	12.55	39.19	71.38	45.25	69.00	26.25	21.75	9.00	8.00	26.88	27.00	123.00	1.31
mm	1371.60	2438.40	203.20	304.80	3210.31	1917.70	762.00	318.77	995.36	1812.93	1149.35	1752.60	666.75	552.45	228.60	203.20	682.75	685.80	3124.20	33.34