

Service Instructions

Syntron® RF-40-B
Electromechanical Vibrating
Feeder

Syntron® Electromechanical Vibrating Feeder

Model: RF-40-B

Parts List

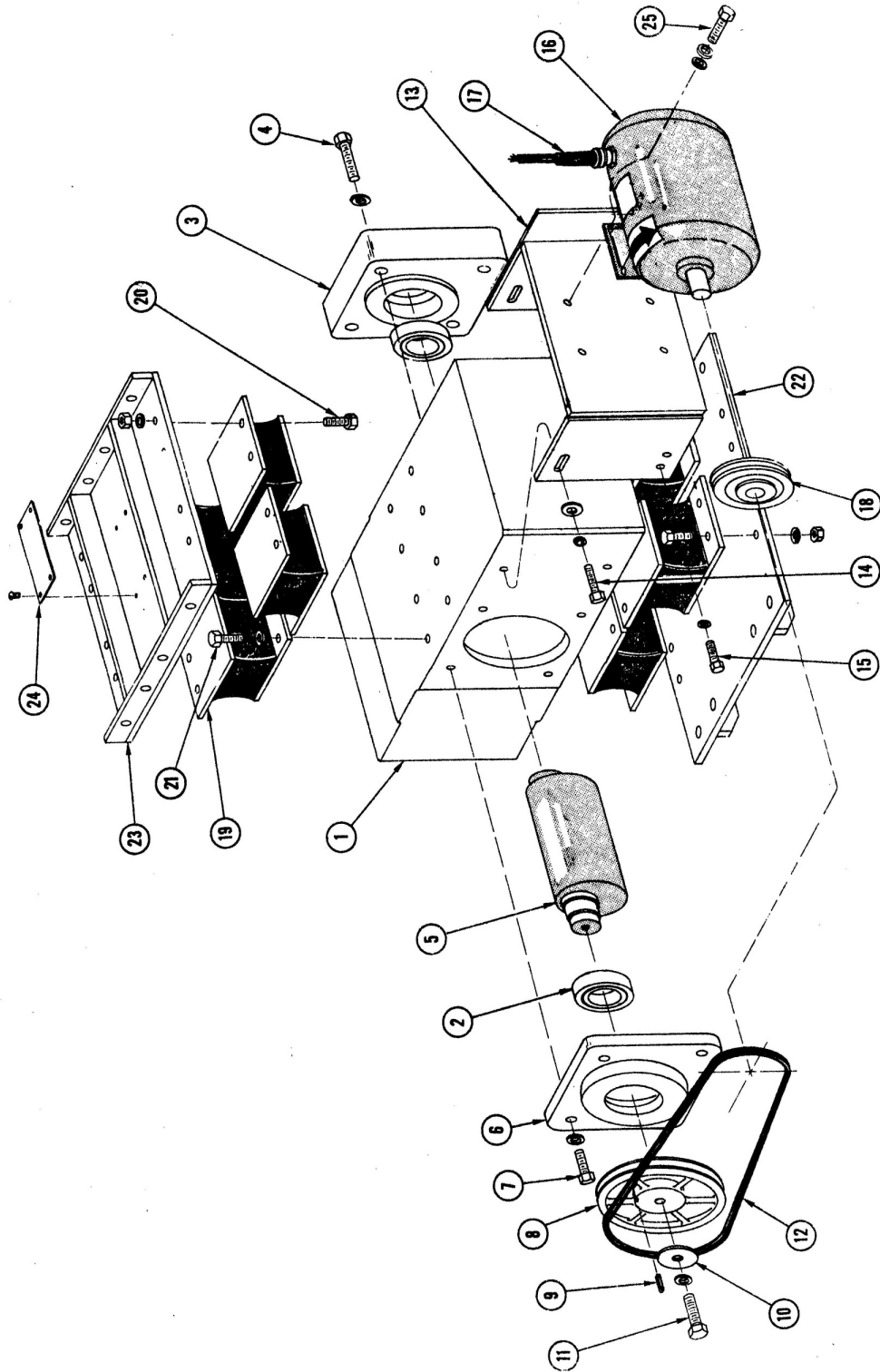
Refer to the Syntron Material Handling Service Instruction SM0850 for installation, operation, maintenance and trouble shooting of "RF" Electromagnetic Feeders.

ITEM	PART NO.	DESCRIPTION
1.	B-140193-A	Housing
2.	0031X169	Bearing
	0185X029	Primer
	0185X048	Loctite Bearing Mount
3.	A-140195-A	Bearing Adaptor
4.	H0310901	Cap Screw, Hex Hd. (3/8"-16 x 2") (Torque 12 Ft./Lb.)
	H0113201	Lockwasher (3/8")
5.	A-140196	Shaft & Eccentric Weight
6.	A-140194-A	Bearing Adaptor (Sheave Side)
7.	H0310201	Cap Screw, Hex Hd. (3/8"-16 x 1") (Torque 12 Ft./Lb.)
	H0113201	Lockwasher (3/8")
8.	0180X062	Sheave
9.	A-139112-D	Key
10.	A-139712	Washer
11.	H0306601	Cap Screw, Hex Hd. (5/16"-18 x 5/8") (Torque 11 Ft./Lb.)
	H0113001	Lockwasher (5/16")
12.	0049X038	Belt
13.	B-161011-A	Motor Mounting Bracket Assembly
	A-181287-1	Mounting Plate
	A-152171	Amplitude Decal
14.	H0310201	Cap Screw, Hex Hd. (3/8"-16 x 1") (Torque 12 Ft./Lb.)
	H0113201	Lockwasher (3/8")
	H0117001	Plainwasher (3/8")
15.	H0310201	Cap Screw, Hex Hd. (3/8"-16 x 1") (Torque 12 Ft./Lb.)
	H0113201	Lockwasher (3/8")
16.	C-164470-B	Motor (230/460V) (Explosion Proof Units Only)
	A-148595-B	Motor (230/460V)
17.	A-149666	Cable Assembly
18.	0180X153	Variable Pitch Sheave
19.	A-139715-A	Drive Spring Assembly
	A-139175-B	Drive Spring Assembly
20.	H0310101	Cap Screw, Hex Hd. (3/8"-16 x 7/8") (Torque 12 Ft./Lb.)
	H0113201	Lockwasher (3/8")
	H0103001	Hex Nut (3/8"-16)
21.	H0310101	Cap Screw, Hex Hd. (3/8"-16 x 7/8") (Torque 12 Ft./Lb.)
	H0113201	Lockwasher (3/8")
22.	C-161268-A	Bottom Compression Plate Assembly
23.	C-161267-A	Top Compression Plate Assembly
24.	A-133521	Nameplate
	H0430600	Drive Screw, Rd. Hd. (#2 x 1/4")
25.	H0306601	Cap Screw, Hex Hd. (5/16"-18 x 5/8") (Torque 11 Ft./Lb.)
	H0113001	Lockwasher (5/16")
	H0116801	Plainwasher (5/16")

WHEN ORDERING PARTS, PLEASE SPECIFY COMPLETE NAMEPLATE DATA!

Maximum current ratings for RF-40-B Feeder:
 1.7 Amperes at 230 Volt Power Supply
 .85 Amperes at 460 Volt Power Supply

Syntron Material Handling reserves the right to alter at any time, without notice and without liability or other obligations on its part, materials, equipment specifications, and models. Syntron Material Handling also reserves the right to discontinue the manufacture of models, parts, and components thereof. For further detailed information contact, Syntron Material Handling.



RF-40-B

Syntron Material Handling

Corporate Office

P.O. Box 1370
Tupelo, Mississippi 38802
Phone: 662.869.5711
Fax: 662.869.7449

Syntron®
Link-Belt®

Tupelo
2730 Hwy 145 South
Saltillo, Mississippi 38866
Phone: 662.869.5711
Fax: 662.869.7493
Toll Free: 800.356.4898
info@syntronmh.com

Changshu
#2 Road No. 1
Changshu Export Processing
Zone
Changshu, Jiangsu, China
215513
Phone: +86 0512.52299002
Fax: +86 0512.52297228
info@syntronmh.com