

## F-Series Feeders

Syntron® F-Series Feeders are designed for robust feeding, high head loads, stability and tuneability. These little feeders deliver big performance.

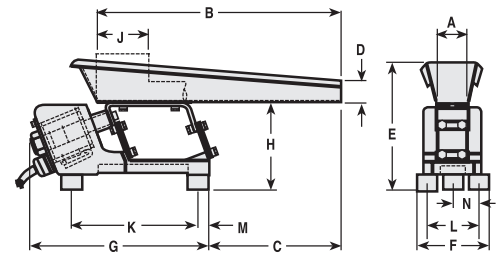
### Model F-T0

Syntron® FT-0 feeder with standard 1-1/2 x 12-inch trough has a maximum capacity of 1,250 pounds per hour. This dependable feeder is ideal for applications demanding top performance at budget prices. Common applications include metering small quantities of dry materials or conveying small parts.

Trough Type		A	B	C	D	E	F	G	H •	J	K	L	M	N
Std. Flat Pan	(in)	1 1/2	12	6 3/8	1	6 3/8	3	9 1/2	4 3/8	-	6 1/4	2 1/4	1/2	1 1/8
	(mm)	38	305	162	25	162	76	241	111	-	159	57	13	29
Spec. Flat Pan	(in)	2	8	2 7/8	1	6 3/8	3	9 1/2	4 3/8	-	6 1/4	2 1/4	1/2	1 1/8
	(mm)	51	203	73	25	162	76	241	111	-	159	57	13	29
Spec. V-Shape	(in)	-	12	6 3/8	1 1/8	5 1/2	3	9 1/2	4 3/8	-	6 1/4	2 1/4	1/2	1 1/8
	(mm)	-	305	162	29	140	76	241	111	-	159	57	13	29
Spec. Tubular	(in)	1 dia	12	6 3/8	-	5 3/4	3	9 1/2	4 3/8	1 3/4 sq	6 1/4	2 1/4	1/2	1 1/8
	(mm)	25	305	162	-	146	76	241	111	44	159	57	13	29

Feed Rate ■ : 1250 lb per hour  
 Current Input \* : 115 V 60 cycle @ 0.35 amps

Approx Net Weight Feeder: 10-1/2 lb  
 Control Selection: Pages 20-21  
 Approx Shipping Weight Feeder and Control: 28 lb



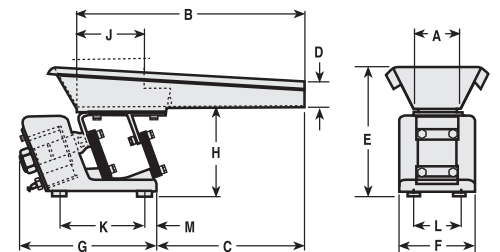
### Model F-T01

Syntron F-T01 feeder with standard 3 x 18-inch flat pan trough has a maximum capacity of two tons per hour. Wider troughs handle larger capacities.

Trough Type		A	B	C	D	E	F	G	H •	J	K	L	M
Std. Flat Pan	(in)	3	18	12 5/8	1 3/4	8 5/8	5	9 1/8	5 7/8	-	5 5/8	3 1/8	13/16
	(mm)	76	457	321	44	219	127	232	149	-	143	79	21
Spec. Flat Pan	(in)	4	18	12 5/8	1 3/4	8 5/8	5	9 1/8	5 7/8	-	5 5/8	3 1/8	13/16
	(mm)	102	457	321	44	219	127	232	149	-	143	79	21
Spec. Flat Pan	(in)	6	12	6 5/8	1 1/4	8 3/8	5	9 1/8	5 7/8	-	5 5/8	3 1/8	13/16
	(mm)	152	305	168	32	213	127	232	149	-	143	79	21
Spec. V-Shape	(in)	-	18	12 5/8	2	8 7/8	5	9 1/8	5 7/8	-	5 5/8	3 1/8	13/16
	(mm)	-	457	321	51	225	127	232	149	-	143	79	21
Spec. Tubular	(in)	3 dia	18	12 5/8	-	9 7/8	5	9 1/8	5 7/8	6	5 5/8	3 1/8	13/16
	(mm)	76	457	321	-	251	127	232	149	152	143	79	21

Feed Rate ■ : 2 tons per hour  
 Current Input \* : 115 V 60 cycle @ .9 amps

Approx Net Weight Feeder: 33 lb  
 Control Selection: Pages 20-21  
 Approx Shipping Weight Feeder and Control: 50 lb



- Feed rate based upon granular material weighing 100 pounds per cubic foot and feeder with standard flat pan.
- Height H with standard cushion rubber mount. For other mounting options, see Available Rubber Mountings chart on page 16.
- \* Unit can be ordered to operate from virtually any commercial power supply up to 230 volts. A step-down transformer is required when operating voltage is 460 volts. Please specify the voltage required and either 50 or 60 Hz at time of order.

## Model F-T02

The Syntron® F-T02 feeder comes with all the standard features and benefits you've come to rely on from Syntron light capacity feeders, **PLUS** a higher stroke (.090 inches) that yields twice the travel speed of other Syntron units. The F-T02 is ideal for a whole range of applications, including high-stroke scale feeding, hard to feed materials, and traditional bulk feeding from hoppers. The Syntron F-T02 feeder with standard 6 x 18-inch flat pan trough has a maximum capacity of ten tons per hour. ■ Wider troughs handle larger capacities.



Syntron F-T02 Feeder

Trough Type	A	B	C	D	E	F	G	H •	J	K	L	M	
Std. Flat Pan	(in)	6	18	12 5/8	2	9 11/16	5	10 1/2	6 3/4	-	5 5/8	3 1/8	13 1/16
	(mm)	152	457	321	51	246	127	267	171	-	143	79	21

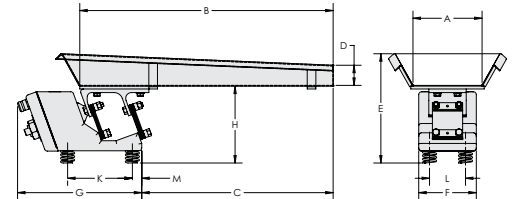
Feed Rate ■ : 10 tons per hour

Current Input \* : 115 V 60 cycle @ 1.5 amps

Approx Net Weight Feeder: 42 lb

Control Selection: Pages 20-21

Approx Shipping Weight Feeder and Control: 65 lb



- Feed rate based upon granular material weighing 100 pounds per cubic foot and feeder with standard flat pan.
- Height E and H with standard coil spring mount. For other mounting options, see Available Rubber Mountings chart on page 16.
- \* Unit can be ordered to operate from virtually any commercial power supply up to 230 volts. A step-down transformer is required when operating voltage is 460 volts. Please specify the voltage required and either 50 or 60 Hz at time of order.
- ▲ Other trough sizes are available. Contact the factory for assistance.

## Model F-010

Syntron® F-010 feeder with standard 5 x 20-inch trough has a maximum capacity of four tons per hour. ■



Syntron F-010 Feeder

Trough Type	A	B	C	D	E	F	G	H •	J	K	L	M	
Std. Flat Pan	(in)	5	20	13	2	9	6	11 5/16	6	-	7 3/4	3 1/8	1
	(mm)	127	508	330	51	229	152	287	152	-	197	79	25
Spec. Flat Pan	(in)	5	24	15	2	9	6	11 5/16	6	-	7 3/4	3 1/8	1
	(mm)	127	610	381	51	229	152	287	152	-	197	79	25
Spec. Flat Pan	(in)	6	18	12	2	9	6	11 5/16	6	-	7 3/4	3 1/8	1
	(mm)	152	457	305	51	229	152	287	152	-	197	79	25
Spec. Tubular	(in)	3 dia	18	12	-	10	6	11 5/16	6	6 sq	7 3/4	3 1/8	1
	(mm)	76	457	305	-	254	152	287	152	152	197	79	25

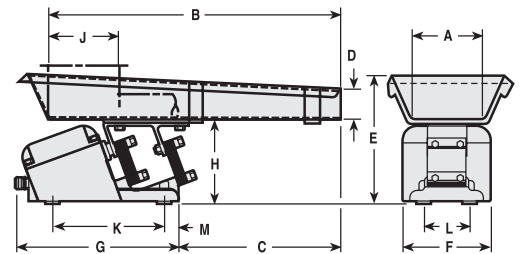
Feed Rate ■ : 4 tons per hour

Current Input: 115 V 60 cycle @ 2.0 amps

Approx Net Weight Feeder: 41-1/2 lb

Control Selection: Pages 20-21

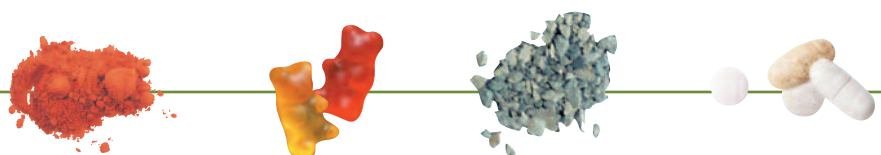
Approx Shipping Weight Feeder and Control: 65 lb



- Feed rate based upon granular material weighing 100 pounds per cubic foot and feeder with standard flat pan.
- Height H with standard cushion rubber mount. For other mounting options, see Available Rubber Mountings chart on page 16.
- \* Unit can be ordered to operate from virtually any commercial power supply up to 230 volts. A step-down transformer is required when operating voltage is 460 volts. Please specify the voltage required and either 50 or 60 Hz at time of order.

The actual capacity of all Syntron Vibrating Feeders varies according to the density of the bulk material being handled and the feeder trough size.

Syntron feeders can be furnished with above-trough drives if required; base mounting is the most common arrangement on light industry feeders.



# feeder models and specifications, cont'd.

## Model F-152

With a capacity of 12 tons per hour, the Syntron® F-152 feeder carries heavier troughs and greater head loads than smaller models such as model BF-2. This unit is commonly used in blending, mixing and packaging operations in industries such as glass and plastic applications. Base or suspension mounting is available, and above-deck drives are an option.

### Below-Deck Drive

Trough Type		A	B	C	D	E	F	G	H	J	K	L	M
Std. Flat Pan	(in)	10	36	5 1/2	2 1/2	15 3/4	8 1/8	16 1/8	11 3/4	19 3/8	29 3/8	14 3/4	13 1/2
	(mm)	254	914	140	64	400	206	410	298	492	746	375	343
Spec. Flat Pan	(in)	6	42	2 1/2	2 1/2	15 3/4	8 1/8	19 1/8	11 3/4	19 3/8	26 3/8	10 3/4	12
	(mm)	152	1067	64	64	400	206	486	298	492	670	273	305
Spec. Flat Pan	(in)	8	36	5 1/2	2 1/2	15 3/4	8 1/8	16 1/8	11 3/4	19 3/8	29 3/8	12 3/4	13 1/2
	(mm)	203	914	140	64	400	206	410	298	492	746	324	343
Spec. Flat Pan	(in)	12	30	8 1/2	2 1/2	15 3/4	8 1/8	13 1/8	11 3/4	19 3/8	29 3/8	16 3/4	15
	(mm)	305	762	216	64	400	206	333	298	492	746	425	381
Spec. Tubular	(in)	3 dia.	36	2 1/8	3	14 1/2	8 1/8	16 1/8	10 1/2	16	22 7/8	-	12
	(mm)	76	914	54	76	368	206	410	267	406	581	-	305
Spec. Tubular	(in)	4 dia.	24	8 1/8	4	15 1/2	8 1/8	10 1/8	10 1/2	16	22 1/8	-	12
	(mm)	102	610	206	102	394	206	257	267	406	562	-	305
Spec. Tubular	(in)	6 dia.	18	11 1/8	6	17 1/2	8 1/8	7 1/8	10 1/2	16	20 7/8	-	12
	(mm)	152	457	283	152	445	206	181	267	406	530	-	305

### Above-Deck Drive

Trough Type		A	B	C	D	E	F	G	H	J	K	L
Spec. Flat Pan	(in)	6	24	8 1/4	32 1/4	14 1/2	4	21 1/2	7	14	12	10 3/4
	(mm)	152	610	210	819	368	102	546	178	356	305	273
Spec. Flat Pan	(in)	6	36	1 1/8	39 7/8	14	4	25	7	14	12	10 3/4
	(mm)	152	914	29	1013	356	102	635	178	356	305	273
Spec. Flat Pan	(in)	8	16	13 3/8	32 1/8	15	5	19 5/8	7	14	12	12 3/4
	(mm)	203	406	340	816	381	127	498	178	356	305	324
Spec. Flat Pan	(in)	8	24	8 1/4	35	14 1/2	4	21 1/2	7	14	12	12 3/4
	(mm)	203	610	210	889	368	102	546	178	356	305	324
Spec. Flat Pan	(in)	8	36	1 1/8	39 7/8	14	4	25	7	14	12	12 3/4
	(mm)	203	914	29	1013	356	102	635	178	356	305	324
Spec. Flat Pan	(in)	10	16	12 1/4	31	14 1/2	4 1/2	18 1/2	7	14	12	14 7/8
	(mm)	254	406	311	787	368	114	470	178	356	305	378
Spec. Flat Pan	(in)	10	24	8 1/4	35	14 1/2	4 1/2	21 1/2	7	14	12	14 3/4
	(mm)	254	610	210	889	368	114	546	178	356	305	368
Spec. Flat Pan	(in)	12	24	8 1/4	35	14 1/2	4 5/8	21 1/2	7	14	12	16 3/4
	(mm)	305	610	210	889	368	117	546	178	356	305	425
Spec. Flat Pan	(in)	14	16	12 1/2	31	14 1/2	4	18 1/2	7	14	12	18 3/4
	(mm)	356	406	318	787	368	104	470	178	356	305	476

Feed Rate ■ : 12 tons per hour

Approx. Current Input \* :115 volt, 60 cycle, 2.5 amps

Approx. Net Weight, Feeder: 95 lb

Control Selection: Pages 20-21

Approx. Ship. Weight, Feeder and Control: 140 lb

■ Feed rate based upon granular material weighing 100 pounds per cubic foot and feeder with standard flat pan.

\* Unit can be ordered to operate from virtually any commercial power supply up to 575 volts. Please specify the voltage required and either 50 or 60 Hz at time of order.

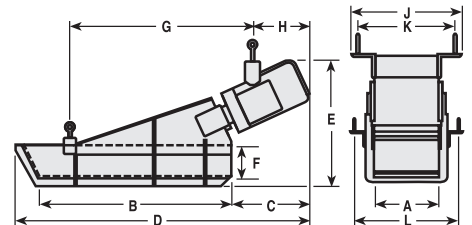
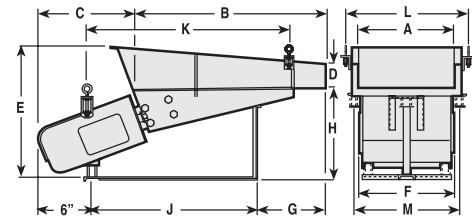
▲ Other trough sizes are available. Contact the factory for assistance.

The actual capacity of all Syntron Vibrating Feeders will vary according to the density of the bulk material being handled and the feeder trough size.

Syntron feeders can be furnished with above-trough drives if required; base mounting is the most common arrangement on light industry feeders. Both base and suspension mounting configurations are available for models F-152 and F-212.



Syntron F-152 Feeder



## Model F-212

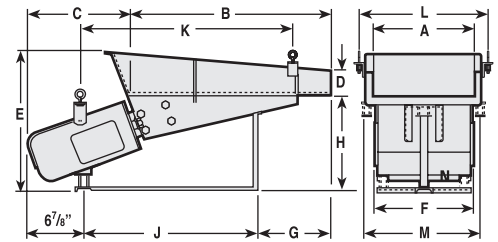
Syntron® F-212 feeder offers the same design features as model F-152, but with a maximum capacity of 20 tons per hour. ■ This proven, rugged unit is ideal for heavy-duty applications. Model F-212 can be supplied with either base or suspension mounting. Above-deck drives are an option.



Syntron F-212 Feeder

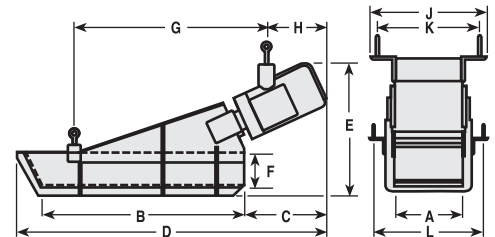
### Below-Deck Drive

Trough Type		A	B	C	D	E	F	G	H	J	K	L	M
Std. Flat Pan	(in)	12	36	8 3/8	3	17 5/8	12	17 1/4	12 5/8	20 1/4	26 1/2	16 3/4	15
	(mm)	305	914	213	76	448	305	438	321	514	673	425	381
Spec. Flat Pan	(in)	8	42	2 3/8	3	17 5/8	12	20 1/4	12 5/8	20 1/4	26 1/2	12 3/4	15
	(mm)	203	1067	60	76	448	305	514	321	514	673	324	381
Spec. Flat Pan	(in)	16	30	11 3/8	3	17 5/8	12	14 1/4	12 5/8	20 1/4	27	20 3/4	15
	(mm)	406	762	289	76	448	305	362	321	514	686	527	381
Spec. Flat Pan	(in)	18	24	14 3/8	3	17 5/8	12	11 1/4	12 5/8	20 1/4	27	22 3/4	15
	(mm)	457	610	365	76	448	305	286	321	514	686	578	381
Spec. Tubular	(in)	10 dia.	24	12	10	23 3/4	12	8 7/8	11 3/4	20 1/4	25 1/2	-	15
	(mm)	254	610	305	254	603	305	225	298	514	648	-	381
Spec. Tubular	(in)	8 dia.	30	9	8	21 3/4	12	11 7/8	11 3/4	20 1/4	24 1/2	-	15
	(mm)	203	762	229	203	552	305	302	298	514	622	-	381
Spec. Tubular	(in)	6 dia.	36	6	6	19 3/4	12	14 7/8	11 3/4	20 1/4	20 1/2	-	15
	(mm)	152	914	152	152	502	305	378	298	514	521	-	381
Spec. Tubular	(in)	4 dia.	42	5 3/8	4	18 5/8	12	14 3/4	12 5/28	25 3/4	23 1/2	-	15
	(mm)	102	1067	137	102	473	305	375	292	654	597	-	381



### Above-Deck Drive

Trough Type		A	B	C	D	E	F	G	H	J	K	L
Spec. Flat Pan	(in)	8	36	9	45	18	5 1/2	32 1/4	8 1/4	15	12	13
	(mm)	203	914	229	1143	457	140	819	210	381	305	330
Spec. Flat Pan	(in)	10	30	12	45	18	5 1/2	29 1/4	8 1/4	15	12	15
	(mm)	254	762	305	1143	457	140	743	210	381	305	381
Spec. Flat Pan	(in)	10	36	9	48	18	5 1/2	32 1/4	8 1/4	15	12	15
	(mm)	254	914	229	1219	457	140	819	210	381	305	381
Spec. Flat Pan	(in)	12	24	15	42	18	5 1/2	26	8 3/8	15	12	17
	(mm)	305	610	381	1067	457	140	650	213	381	305	432
Spec. Flat Pan	(in)	12	30	12	45	18	5 1/2	30 1/4	8 1/4	15	12	17 1/8
	(mm)	305	762	305	1143	457	140	768	210	381	305	435
Spec. Flat Pan	(in)	12	36	9	48	18	5 1/2	32 1/4	8 1/4	15	12	17 1/8
	(mm)	305	914	229	1219	457	140	819	210	381	305	435
Spec. Flat Pan	(in)	16	24	15	42	18	5 1/2	26 1/4	8 1/4	15	12	21
	(mm)	406	610	381	1067	457	140	667	210	381	305	553



Feed Rate ■ : 20 tons per hour  
Approx. Current Input \* :115 volt, 60 cycle, 4.5 amps

Approx. Net Weight, Feeder: 170 lb  
Control Selection: Pages 20-21  
Approx. Ship. Weight, Feeder and Control: 265 lb

- Feed rate based upon granular material weighing 100 pounds per cubic foot and feeder with standard flat pan.
- \* Unit can be ordered to operate from virtually any commercial power supply up to 575 volts. Please specify the voltage required and either 50 or 60 Hz at time of order.
- ▲ Other trough sizes are available. Contact the factory for assistance.

